

## Pattern Correction: Nora #289

Corrections apply to Version 1 of the Nora pattern released in June 2016.

### Instructions - Cutting Layouts

1. When we calculated the fabric requirements, we grouped sizes in an attempt to make the layouts as simple as possible. This strategy resulted in excess fabric for some sizes of View A. Below are revised cutting layouts to more efficiently use the fabric. See the new layouts below.

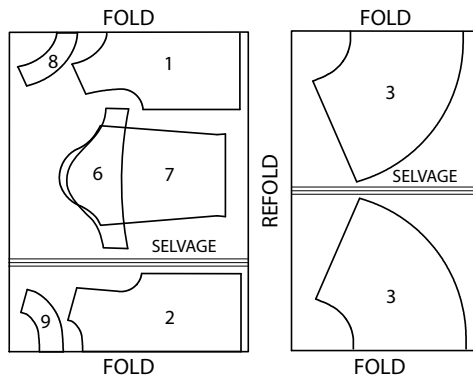
### Pattern - Fabric Requirements

1. Below are the updated fabric requirements based on the new cutting layouts. The requirements allow for nap and moderate shrinkage and are for 58" wide fabric.

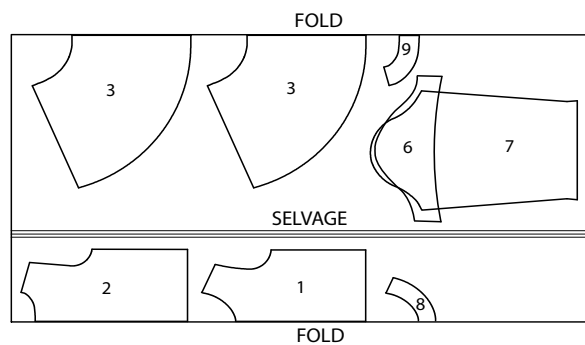


SIZE	1 (18mo)	2 (24 mo)	3	4	5	6	7	8	10	12	14
<b>FABRIC REQUIREMENTS IN YARDS</b>											
View A Short Sleeve	1 1/8	1 1/8	1 1/8	1 1/4	1 3/8	1 3/8	1 1/2	1 1/2	1 7/8	2	2 1/8
View A Long Sleeve	1 1/8	1 1/8	1 1/8	1 5/8	1 5/8	1 3/4	1 7/8	1 7/8	2 3/8	2 3/8	2 1/2
View B Short Sleeve	7/8	7/8	7/8	1	1	1	1 1/4	1 1/4	1 3/8	1 3/8	1 1/2
View B Long Sleeve	7/8	7/8	7/8	1	1	1	1 5/8	1 5/8	1 3/4	1 7/8	2

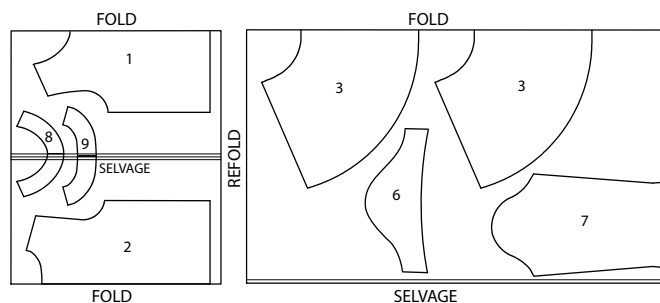
#### View A, Sizes 1 - 3



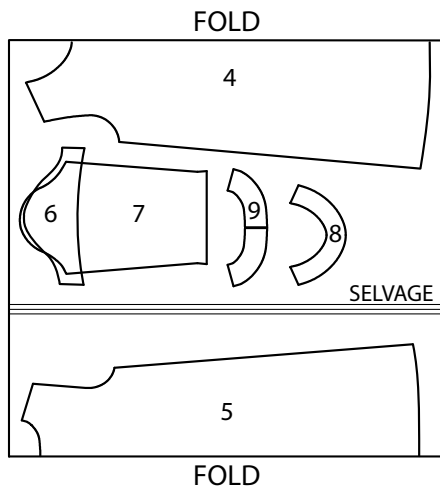
#### View A, Sizes 4 - 8



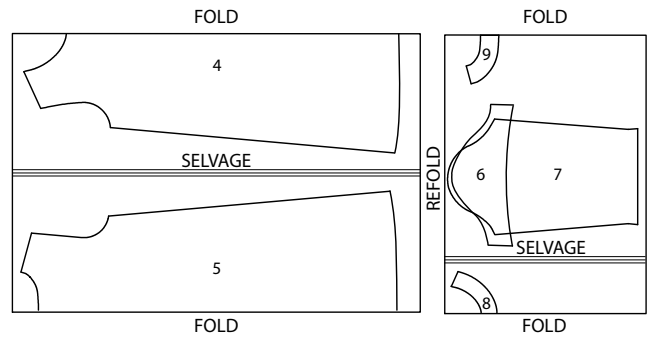
#### View A, Sizes 10 - 14



### View B, Sizes 1 - 6



### View B, Sizes 7 - 14



## How to Determine Which Pattern Version You Have

As we find printing errors, we will make corrections to the subsequent printings of covers, instructions and patterns. We began including trackable version codes with the newly branded pattern covers and patterns with the navy and aqua branding. Make sure to check the version number for the item specified as the covers, instructions and patterns are all printed separately. Patterns released prior to the navy and aqua branding like those in the top pink band or paper envelopes do not have a code to track versions.

For covers, the version code is found on the back cover at the bottom. There will be a code like "CC3S-1". The last number, in this case 1, is the version of the cover. In this example, this is the first printing of the cover. From time to time, we may apply a sticker to the covers to fix an error between printings.

For instructions, the same version code is found in the bottom right-hand corner of each instruction page. Each sheet can be updated separately, so check each page.

For patterns, the same version code is found on each page of tissues. Each sheet can be updated separately, so check each page.